

Chamber News

» Official Business Publication Of The Kalispell Area Chamber Of Commerce «

Impact Fee Hearing March 2; Vote March 9

A Transportation Impact Fee public hearing will be held before the City Council on Monday, March 2, 7:00 pm at City Hall. The Chamber Board opposes the proposed fee schedule and plan as inadequate and onerous given the impediment this would create for investment and job recovery. For further information, contact the Chamber at 758-2804.



China Mission Delegation of 100 will participate in 9-day trade and cultural mission to China

One hundred members of the Kalispell Chamber and their family and friends will travel to China for a 9-day trade

continued on page 6 »

Get In Contact

Call Bridgette to find out how you can benefit from all the activity on the Chamber of Commerce website 406.758.2801.

Legislative Session Briefings Continue in March

The Chamber Government Affairs Committee's one-hour briefing and planning session on the Chamber's legislative agenda continue into March and April, each Friday from noon-1:00 pm. These sessions include a review of our bills list with our representative in Helena as well as legislators and other special guest speakers via teleconference. Our focus in the second half of the session will be on reappraisal, stimulus funding, and the state budget. All members are invited to attend. Consult the event page at kalispellchamber.com for agenda of these weekly meetings.



Chamber Snapshot

Visitor's Center Information Requests:

	Jan '09	YTD
Phone Calls:	482	482
Walk-ins	209	209

VACATION

Packets	3	3
Inquiries	73	73
Email Inquiries	156	16

RELOCATION

Packets	0	0
Basic	25	25
Phone Books	0	0

Chamber Website Activity

Unique Visits	3,443	3,443
Total Visits	4,253	4,253

At a Glance

MARCH UNWINDS

» Tuesday, March 3, 2009

Holiday Inn Express

275 Treeline Road

Kalispell, MT

From 5:00 to 6:30 PM

» Sponsoring an UNWIND is a great opportunity to showcase your business to other Chamber Members as well as the community. There are still a few dates left open for 2009. Contact Chamber Ambassador Ashley King at 406-755-4271 to schedule your UNWIND.

In This Issue

- 1 Government Affairs Briefs
China Delegation
- 2 New Members
- 3 New Members, *continued*
Renewals
- 4 New Members, *continued*
John Tester & Denny Rehberg visit the Flathead
- 5 March Calendar
- 6 Brown Bag
China Delegation, *continued*
- 7 UNWIND
- 8 Leadership Flathead
February Ribbon Cuttings
- 9 St. Patrick's Day Parade Registration Form

Officers

Bob Schneider, Chairman of the Board,
First Interstate Bank

Terry Kramer, Vice Chairman of the Board,
Kramer Enterprises, Inc.

Jim Lehner, Secretary/Treasurer, Plum Creek

Mark Lalum, Immediate Past Chairman, CHS

Directors

Dick Buchanan, Byte Savvy

Susie Burch, Flathead Valley Community College

Kris Carlson, A+ Plus Healthcare

Nancy Davis, Prudential Financial

Reed Gunlikson, R Gunlikson CPA's

Scott Hagel, Crowley Law Firm

Dave Harvey, Sportsman's Ski Haus

Tom Kurdy, The Daily Inter Lake

Tom Lund, Rocky Mountain Bank

Dave Mitchell, CTA Architects & Engineers

Denise Nalty, Nalty Real Estate

Cheri Nelson, Express Employment Professionals

Jim Ness, Glacier Bank

Jim Oliverson, Kalispell Regional Medical Center

Loren Sallee, Loren's Auto Repair

Ken Sugden, Flathead Electric Cooperative

Steve Thompson, Semitool

Ex-officio Directors

Mike Pence, Flathead County Administrator

Professional Staff

Joe Unterreiner, President 758-2804

Bridgette Evans, Director of
Member Services 758-2801

Cary Aubrey, Executive Assistant . . 758-2803

Diane Bebee, Receptionist 758-2800

Chris Parson, Small Business
Development 758-2802

Doug Bolender, Government Contracting
Services 755-4221

Jill Seigmund, Leadership Flathead
Program Manager 758-2810

Consultants

Anderson, Baker & Swanson - Government Affairs

Edge Communications - Media & Public Relations

JCCS - Tax & Audit Counsel

Janet Schwalk - Bookkeeping

Kalispell Chamber of Commerce Mission Statement

The central mission of the Kalispell Chamber of Commerce is the cultivation and development of entrepreneurs and communities through the spirit of enterprise.

New Members

Please welcome these new members with your business.

ALLGLACIER.COM

Tim Bradshaw ~ Owner

Chris Wolstenholme ~ Primary Contact

610 West Broadway

Jackson, WY 83002

Phone: 307-733-5681

Fax: 307-734-0918

Email: chris@verticalmedia.com

Website: www.allglacier.com

ALLGlacier.com is part of the AllTrips.com travel guide network. Our travel guides are engaging and timely connecting visitors to local businesses in great places.

BILLMAYER & HAFFERMAN, INC

Jay Billmayer & Kurt Hafferman ~ Owners

2191 3rd Ave E

Kalispell, MT 59901

Phone: 406-257-8708

Fax: 406-257-8710

Email: kurt@billmayer.com

Website: www.billmayer.com



Licensed professional engineers providing water resources, floodplain, water rights and all levels of civil engineering design, construction, and project management.

CAPRISTRANO HOUSE

Allyson Kuechmann ~ Owner

695 Capistrano

Kalispell, MT 59901

Phone: 406-756-8208

Email: capistranohouse@yahoo.com

Website: www.capistranohousemontana.com

Spacious vacation home at an affordable price! Small or large groups, weddings and events. Available year round!

CUSTOM SYSTEMS

Bernie Windauer ~ Owner

837 2nd Ave W

Kalispell, MT 59901

Phone: 406-257-8814

Email: btwind@centurytel.net

Mechanical/Machine design and prototype construction.

continued next page >>

Renewals

10 Plus Years

Alliance Title & Escrow Corp
Buffalo Hill Golf Club
Consolidated Electrical Distributors
Crowley Law Firm
Daily Inter Lake
Flathead Electric Cooperative
Flathead National Forest
Flowers By Hansen
Glacier National Park
Glacier Natural History Assoc
Glacier Wholesalers
Hockaday Museum of Art
James H Cossitt Attorney at Law
McDonalds
Montana First Insurance Inc
Mountain Trader
Office Solutions and Services
R Dennis Winkel MD Family Practice
Signature Theaters

5 to 9 Years

Comfort Keepers
Lang Construction Inc.
Nalty Real Estate/Riverview Associates

1 to 4 Years

Aspen Insurance
Bajio Mexican Grille, LLC
Belton Chalet
Camas Creek Yarn, LLC
Flathead County Library Foundation
Flathead Quilt Guild
Ford Construction
Glacier Management LLC
Joseph Eve
Northwest Farm Credit Services
R Porch Construction

New Members

>> from page 2

FLATHEAD VALLEY CHAPTER SHRM

(Society for Human Resource Management)
Joann Gould ~ Primary Contact
PO Box 9932
Kalispell, MT 59904
Phone: 406-837-6020
Fax: 406-837-6025
Email: flatheadshrm@gmail.com
Website: www.flathead.shrm.org



Flathead Valley SHRM is a group of human resource professionals who meet monthly to provide opportunities to interact, network, communicate and educate on relevant topics for the human resource professional. We are an affiliate of the National Society for Human Resource Management.

GOLDBERG PROPERTIES

Mark Goldberg ~ Owner
195 W 12th Ave
Denver, CO 80204
Phone: 303-759-8000
Fax: 303-863-0275
Email: mgoldberg@goldbergproperties.com
Website: www.goldbergprop.com

Goldberg Properties is the owner and developer of the Spring Prairie Center which contains: Lowe's, Costco, Wells Fargo Bank, Famous Dave's, McDonalds, Starbucks and Med North Urgent Care.

MASSEY EXCAVATING AND LANDSCAPING, INC

Michael Massey ~ Owner
1535 Lake Blaine Road
Kalispell, MT 59901
Phone: 406-257-8947
Fax: 406-756-6555
Email: hmmassey6@yahoo.com

Locally owned and operated with 24 years of experience in septic tank installation, excavation, and landscaping.

MONTANA STATE PARKS

Mary Beth Pendley ~ Primary Contact
300 Lone Pine Road
Kalispell, MT 59901
Phone: 406-755-2706
Email: mpendley@mt.gov

State Parks, Trails, Camping, Facilities for rent

MOUNTAIN WEST INSURANCE & FINANCIAL SERVICES, LLC

Glen D. Olberding ~ Agent
444 West Idaho
Kalispell, MT 59901
Phone: 406-752-2265
Fax: 406-752-3682
Email: gleno@mtwestinsurance.com

continued next page >>



Sen. Jon Tester speaks on the stimulus package and fields questions from attendees.



Congressman Rehberg Speaks at an Economic Roundtable at Flathead Valley Community College on February 18th.

New Members

>> from page 3

PACIFIC STEEL & RECYCLING

Dale Augusta ~ Owner
 Flathead Lane, PO Box 488
 Kalispell, MT 59903
 Phone: 406-755-7011
 Fax: 406-755-7010
 Email: dale_augusta@pacific-steel.com
 Website: www.pacific-steel.com



Steel Sales & Recycling Center

SYLVAN LEARNING

Bill & Charlene Dale ~ Owners
 1600 Whitefish Stage Rd
 Kalispell, MT 59901
 Phone: 406-752-4657
 Fax: 406-752-4760
 Email: sylvan@montanasky.us
 Website: www.tutoring.sylvanlearning.com/index.cfm



Tutoring – Advanced reading, math, algebra, beginner reading online, and SAT prep

TOM & JULIE EVANS

Individual Membership ~ Retired
 Email: realityrv@msn.com

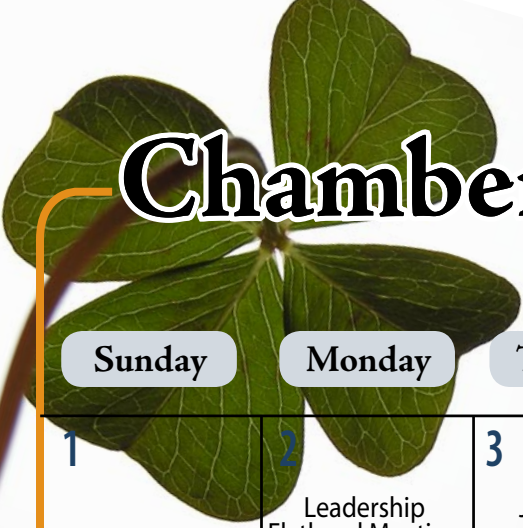
Action in the 61st Session



The Chamber has taken action on these proposed bills:

Bill No.	Sponsor	Short Title	Action
HB123	Jones	Extend economic development programs	Support
HB 150	Brown	Recreation responsibility act	Support
HB163	Cohenour	Revise tax incentives for film industry	Support
HB201	Taylor	Fund Clark Fork River Basin Task Force	Support
HB 240	Lake	Reduce business equipment tax	Support
HB 440	Mendenhall	Small business consideration act	Support
HB 455	Reinhart	Big Sky Rivers Act	Oppose
SB 61	Hawks	Public school impact fees	Oppose
SB 192	Zinke	Small business work comp relief	Support
SB158	Barkus	Revise number of judges in judicial dist.	Support
SB 277	Kaufman	Box store tax	Oppose
SB 349	Tutvedt	Revise state bidding to protect information	Support
SB 371	Perry	Clarify "at work" for work comp purposes	Support
SJ13	Zinke	Commemorate Glacier Park's centennial	Support

Chamber Calendar

March 2009



Sunday	Monday	Tuesday	Wednesday	Thursday	Friday	Saturday
1	2 Leadership Flathead Meeting 3:00pm- 5:00pm	3 JSEC Board Meeting 3:30pm – 5:00pm UNWIND at Holiday Inn Express 5 - 6:40 pm	4 Education and Communication Committee Meeting 8:00am– 9:00am	5	6 Montana Legislative Session Action and Issues 12:00pm – 1pm	7
8	9	10 Kalispell Downtown Association 12:00pm - 1:30pm	11 Agribusiness Committee Meeting 7:00am – 8:00am Ambassador Meeting 4:00pm – 5:00pm	12	13 Montana Legislative Session Action and Issues 12:00pm – 1pm	14
15	16	17 Flathead Community Foundation 4:00 - 5:00pm  Parade 4:00pm St. Patrick's Day	18 Natural Resources Committee Meeting 8:00am Transportation Committee 4:00pm – 5:00pm	19 JSEC 11:30 – 1:00pm	20 Montana Legislative Session 12:00pm – 1pm  First Day of Spring	21
22	23 BEAR Meeting 4:00pm – 5:00pm	24	25	26	27 Montana Legislative Session Action and Issues 12:00pm – 1pm	28
29	30 FRBC Meeting 8:30 am	31	<p>Watch for this event in April</p> <ul style="list-style-type: none"> 1 Education and Communication 8am 3 2009 Mission to China Group Departs 7 UNWIND First Interstate Bank – Hutton Ranch 			All Meetings are at The Chamber unless otherwise stated.



Brown Bag Series: Blueprint for Business

Respecting the Individual - Sexual Harassment Awareness

The subject of Sexual Harassment raises all sorts of emotions in people. Since 1993 when the high profile Anita Hill/Clarence Thomas sexual harassment issue hit the national news, there has been increased awareness of the problems associated with Sexual Harassment in the Workplace. Unfortunately, along with that awareness, there have been myths, untruths, and misunderstandings about things such as what sexual harassment is (and isn't), legal issues surrounding liability for harassment claims, methods for properly resolving claims, and personal reaction to harassment situations.

During this session, participants will explore the myths and realities surrounding sexual harassment claims, and discuss the legal, moral and practical ramifications of harassment in the workplace. Participants will have opportunity to provide feedback and opinion, and will leave the session with an introduction to the facts and to application of laws, policies and common sense toward maintaining a respectful and safe workplace.

This month's facilitator:

Facilitator: Warren Tolley, SPHR is Director of Human Resources at Flathead Valley Community College. His many years of experience in Human Resources Management and Organizational Development comes from multiple industries and several regions of US and Canada. Previous to joining FVCC, Mr. Tolley led Human Resources



departments in Hospital, Pharmaceutical and Chemical industries. Mr. Tolley, a certified Master Trainer, has a degree in Business Management from Brigham Young University, and extensive graduate work in Human Resource Development. He is certified Senior Professional Human Resources Professional by the Society for Human Resource Management, and is currently a member of the National Board of Directors of College and University Professional Association for Human Resources (CUPA-HR). Tolley and his wife Wendy are parents of four children, and reside near Kalispell, Montana.

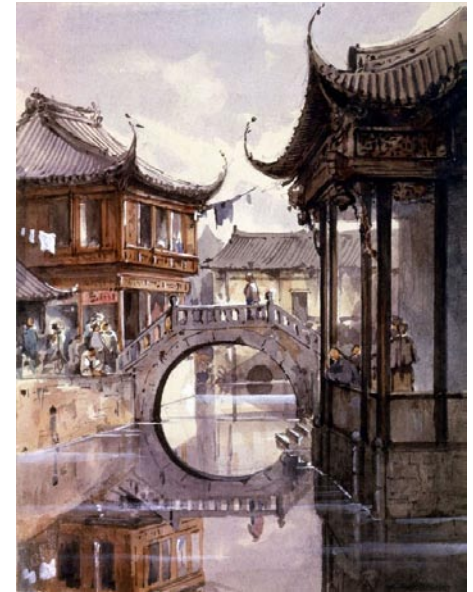
Monthly **Blueprint for Business Success brown bag sessions** feature business professionals facilitating informative discussions. Attend to receive relevant information and opportunities to ask questions of the professionals and network with peers.

Who should attend? Employers interested in growing and evolving more effective organizations.

Why?

- Exchanging ideas, insights and real-world solutions directly impacts your bottom line.
- Making better decisions quickly requires more and better information.
- Utilizing all available resources to operate and grow is smart business.
- Engaging and energizing your employees helps make your business successful.

Date: Wednesday, March 11, 2009
 Time: Noon – 1:00 pm
 Location: The Summit
 205 Sunnyview, Kalispell
 Cost: No cost!
 RSVP: Terri Haueter @ 758-6279 or
 thaueter@mt.gov



China Delegation

continued from cover

and cultural mission on April 3-11. The delegation will visit economic development zones in Shanghai and Hangzhou and engage in business meetings in Beijing. The mission will also include visits to attractions including: the Great Wall, Tian An Men Square, the Forbidden City, the Summer Palace, and Lingyin Temple. Optional tours include: Peking Opera, boat ride on the Grand Canal in Suzhou, a performance of Cirque du Soleil, and maglev train ride. The Chamber's April 21 luncheon will feature a report from participants on the trip and the launch of Mission to China 2010, which will be provide an opportunity for those interested in joining the group next year during spring break week, March 26 – April 3, 2010.

China continues to be an immense market for American goods and services and a vital supplier to American manufacturers and consumers. US trade with China exceeded \$245 billion in 2004. This trip is an opportunity to experience China with other members of the Kalispell Chamber of Commerce and their family and friends. Look for additional information in future issues of Chamber News, or go to the Events page on www.kalispellchamber.com.

UNWIND

*February 3,
MontanaSky*

Tuesday, February 3 saw a nice crowd at the MontanaSky UNWIND. Qdoba provided a 'Fiesta' atmosphere with a delicious Taco Bar that filled the building with its mouth-watering aroma.

Mary Skalsky of West One Bank won the Split the Pot drawing.



Becky Spain, Amore' Salon and Spa and Chance Wachholz enjoying the UNWIND festivities at MontanaSky.net



Dick Dasen Jr, MontanaSky.net and Ashley King, Three Rivers Bank and UNWIND chair give away prizes!

To schedule an UNWIND call Ashley at Three Rivers Bank (406) 758-2801 or Bridgette at (406) 758-2801.

UNWIND

February 18, TeleTech

Wednesday, February 18 TeleTech hosted the UNWIND at their facility in the Gateway Plaza. Sandwiches and cold cuts from Costco were available for munching. TeleTech staff led tours of the facility allowing a rare behind the scenes look at the inner workings of TeleTech.



Dawn Jackson, The Lodge at Whitefish Lake wins the Split the Pot!



TeleTech has great locations for break...



...and play...



Along with Mayor Pam Kennedy, about 100 people enjoyed the festivities of the UNWIND at TeleTech.



Crime & Law Enforcement in the Flathead Valley

was the topic of February's Leadership Flathead session.

Did you know that approximately 90 percent of crime in Flathead County is related to drug and/or alcohol use? Here's another staggering

statistic... about 24 percent of local high school students say they have "binge" drank, meaning they have consumed at least four alcoholic beverages within a one-hour period. Clearly alcohol and drug abuse is a serious problem in the Flathead Valley. The Class of 2009 had the opportunity to hear from law enforcement officials, physicians, and others who are dedicated to addressing this problem. They also heard from Department of Correction officials regarding the Pre-Release Center that will open in Kalispell this October.



Leadership Flathead Class of 2009 members Eric Cunningham and Dan James walk a straight line as they tour the Montana Highway Patrol's mobile DUI processing vehicle.

Here are some things everyone can do to help battle drug and alcohol abuse in our valley:

- Talk with your kids about the dangers of drugs and alcohol. And just as importantly, listen to them. Know their friends, and know their friends' parents. Don't fall into the mind trap that "good" kids from "good" families are safe from the dangers of drugs and alcohol. Families are the most influential when it comes to how kids view alcohol and drugs.
- Dispose of unwanted pharmaceuticals and medical waste at a local pharmacy. Do not flush pills down the drain.
- Doctors need to use more caution when prescribing pain medication, as addiction to prescription pain medications is on the rise in the Flathead and throughout the nation.
- Suboxone is a substance used to treat opioid addictions. Unfortunately there aren't enough physicians in the valley who can prescribe this substance, and those who are able to prescribe it, can only treat 100 people at a time as mandated by the USDA. Because



Chief of Kalispell Police Roger Nasset shows the Ballistic Engineer Armored Resonse (BEAR) Vehicle to members of the Class of 2009.

suboxone has been shown to be highly effective at rehabilitating opioid addicts, physicians need to be able to treat more than 100 people at a time.

- The Pre-Release Center scheduled to open in Kalispell this fall is a good idea. Once released from the state prison system, most convicted felons return to their hometown. It's important that before returning to their communities, they are equipped with the life skills needed to be productive, law abiding citizens. Attend the public workshop on the Pre-Release Center scheduled for Feb. 26 at 7:00 p.m. in Kalispell. For more information, call Kerry Pribnow at (406)444-4910 or email him at kpribnow@mt.gov

This session was generously sponsored by the following local businesses: Christensen, Moore, Cockrell, Cummings & Axelberg, PC; Crowley/Fleck, PLLP; Glazier Law Firm, PC; Hammer, Hewitt, Jacobs & Floch, PLLC; North Valley Hospital; and Plum Creek. ●



Montana Highway Patrol Captain Clancy King explains how MHP works with other agencies to intercept illegal drugs within the state

February Ribbon Cuttings



J2 Office Solutions



Gateway Community Center - United Way

*The Ancient order of Hibernians and the
Kalispell Area Chamber of Commerce*
Present

St. Patrick's Day Parade



Tuesday

March 17 at 4pm



**Happy
St. Patrick's
Day!**

A small illustration of a pot of gold with a green shamrock on top.

**Line up begins 3:00pm
1st Avenue West and 8th Street
South end of Flathead High School
Come in on 5th Street
\$100 Award Top Parade Entry**

Question? Call Mark Lalum 755-7400 or 261-1654

Organization _____

Name of your Entry _____

Contact Person _____

Address _____

City _____ Phone _____

Send entries to
Mark Lalum Box 579 Kalispell MT 599003 or fax 755-7478

Providing Economic, Community, and Workforce Development Services

KALISPELL
Chamber of Commerce

15 Depot Park
Kalispell, MT 59901

OCCUPANT / POSTAL PATRON

PRSRD
U.S. Postage
PAID
Kalispell, MT
Permit #13

